



# Majenko Technologies

---

## chipKIT<sup>TM</sup> Lenny Development Board

DS1184 Revision 3

Arduino Leonardo-compatible PIC32-based development  
board with USB interface

Information contained in this publication regarding device applications and the like is provided only for your convenience and may be superseded by updates. It is your responsibility to ensure that your application meets with your specifications. MAJENKO TECHNOLOGIES MAKES NO REPRESENTATIONS OR WARRANTIES OF ANY KIND WHETHER EXPRESS OR IMPLIED, WRITTEN OR ORAL, STATUTORY OR OTHERWISE, RELATED TO THE INFORMATION, INCLUDING BUT NOT LIMITED TO ITS CONDITION, QUALITY, PERFORMANCE, MERCHANTABILITY OR FITNESS FOR PURPOSE. Majenko Technologies disclaims all liability arising from this information and its use. Use of Majenko Technologies devices in life support and/or safety applications is entirely at the buyer's risk, and the buyer agrees to defend, indemnify and hold harmless Majenko Technologies from any and all damages, claims, suits, or expenses resulting from such use. No licenses are conveyed, implicitly or otherwise, under any Majenko Technologies intellectual property rights.

# Contents

<b>1 Overview</b>	<b>2</b>
<b>2 Board Layout</b>	<b>3</b>
<b>3 5V Operation</b>	<b>5</b>
<b>4 Programming</b>	<b>5</b>
4.1 Entering the bootloader . . . . .	5
4.2 Uploading Firmware . . . . .	5
<b>5 Electrical Characteristics</b>	<b>6</b>
5.1 Absolute Maximum Ratings . . . . .	6
5.2 DC Characteristics . . . . .	6
5.3 AC Characteristics . . . . .	6
<b>Appendix A Pin Mapping</b>	<b>7</b>
A.1 Board Pins . . . . .	7
A.2 Chip Pins . . . . .	8
<b>Appendix B Peripheral Mapping</b>	<b>9</b>
B.1 SPI . . . . .	9
B.2 I <sup>2</sup> C . . . . .	9
B.3 UART . . . . .	9
B.4 PWM . . . . .	9
B.5 Interrupts . . . . .	9
<b>Appendix C FastProg</b>	<b>10</b>
<b>Appendix D Schematic</b>	<b>11</b>
<b>Appendix E License</b>	<b>12</b>
E.1 License Brief . . . . .	12
E.2 License Full Text . . . . .	13
E.2.1 Definitions . . . . .	13
E.2.2 Fair Dealing Rights. . . . .	14
E.2.3 License Grant. . . . .	14
E.2.4 Restrictions. . . . .	14
E.2.5 Representations, Warranties and Disclaimer . . . . .	15
E.2.6 Limitation on Liability. . . . .	15
E.2.7 Termination . . . . .	15
E.2.8 Miscellaneous . . . . .	16
<b>Appendix F Document Revisions</b>	<b>17</b>

# 1 Overview

The chipKIT™ Lenny development board is a PIC32-based USB interface and prototyping board. It is designed to interface directly with a computer's USB port and provide a number of USB functions including CDC/ACM serial and HID Keyboard and Mouse.

The board presents the PIC32's GPIO and peripheral pins in a footprint compatible with the Arduino Leonardo and offers similar functionality but with extra enhancements.

The powerful PIC32 chip provides plenty of resources for even the most demanding of situations.

## High-Performance 32-bit RISC CPU:

- **PIC32MX270F256D**
- **40MHz maximum frequency**
- **256KB Flash**
- **64KB SRAM**
- **SPI**
- **I<sup>2</sup>C**
- **UART**

## USB Programming Port

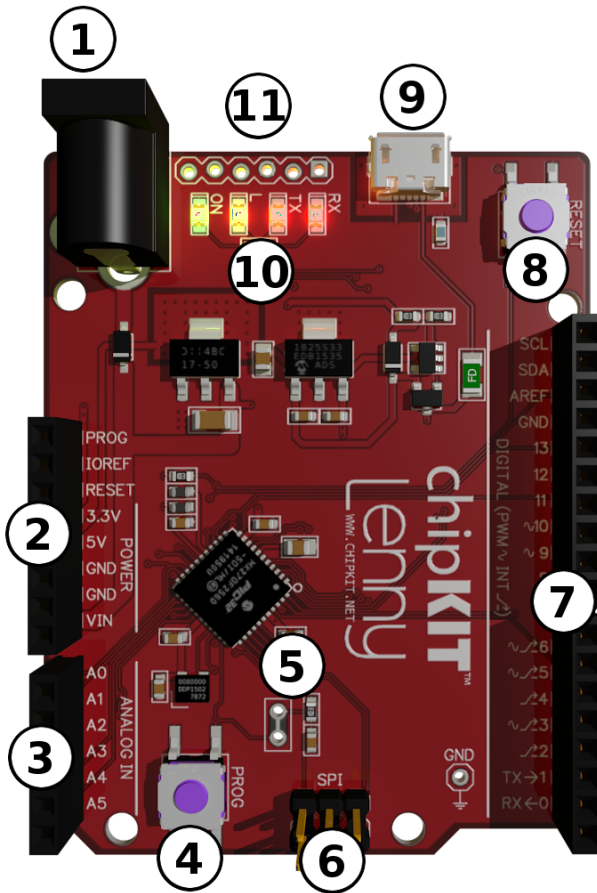
- **CDC/ACM STK500v2 Bootloader**

## PROG Button and LEDs

- **PROG "User" button on separate IO with FastProg**
- **Three independant LEDs with USB RX/TX control**

## 2 Board Layout

Appendix A on page 7 lists all the pin mappings for the board presented as viewed from the IO pins, the chip's pins and the internal port names.



### 1: Power Input

The DC Barrel Jack is used to provide power to the board from an external source. It uses a standard 2.1mm jack plug and can accept anywhere between 6.5V and 12V DC with the positive on the central pin.

### 2: Power Header

The power header presents various power supplies to the user. It also provides a number of internal house-keeping and system management signals. From the top of the image down these are:

- **PROG** – This is a connection to the IO pin, which is driven by the PROG button (see below) for ease of entering programming mode when the board is embedded in a project.
- **IOREF** – The IOREF pin is used by shields to detect the correct voltage to use for IO pins. On the Lenny this is set to 3.3V.

- **3.3V** – The main 3.3V core voltage at which the majority of the board's logic operates.
- **5V** – Many devices require 5V to operate. This pin provides 5V either regulated from the DC input or direct from the USB socket, whichever is connected.
- **GND** – These pins are a ground connection.
- **VIN** – The input voltage. It is connected, via a diode, to the barrel jack. This may either be used to provide power to the board without the bulk of a DC jack plug, or it may be used to provide power to external circuits. The voltage of this pin is dependent on the voltage provided to the barrel jack.

### 3: Analog Inputs

The Lenny provides 6 dedicated analog inputs. These can read voltages between 0V and 3.3V and provide a 10 bit resolution which yields a value between 0 and 1023.

### 4: PROG Button

To upload firmware to the board it must first be placed in programming mode. For many chipKIT™ boards this is achieved by holding a PROG button and pressing RESET. However, in the Lenny this has been somewhat simplified by the inclusion of a FastProg circuit. Simply pressing the PROG button resets the board and places it in programming mode. FastProg can be manually disabled (see below) which allows the PROG button to then be used by your own program, but at the expense of a more complex method of entering programming mode.

### 5: FastProg Jumper

FastProg can be disabled by cutting the track joining the two pins of this unpopulated jumper. A craft (or “X-Acto”) knife can be used to cut through the tinned portion of the track. Should FastProg be required again in the future a jumper can be soldered into place to bridge the connections again. For more flexible operation a “bus-bar” style removable jumper can be installed to enable and disable FastProg at will.

If FastProg is disabled entering the bootloader becomes more complex:

1. Press and hold the PROG button
2. Briefly press and release the RESET button
3. Release the PROG button

The L led (see below) should start blinking.

## 6: SPI Header

This header provides an SPI connection (DSPI1) used by standard Arduino shields.

The pins, in the orientation as depicted in the image above, are as follows:

RESET	SCK	MISO
GND	MOSI	5V

## 7: Digital Pins

17 digital pins are provided for general use. Many of them also have other special functions. Pins 0 and 1 are the primary UART “Serial0”. This is separate from the USB UART connection which is “Serial” since the USB UART connection is directly driven by the internal USB peripheral in the PIC32 (see below).

Pins 2 and 4 are used for the secondary UART “Serial1”. Pins 10 through 13 are also the SPI port DSPI0. These are arranged in the standard Arduino Uno arrangement.

AREF is used to set the analog reference voltage for the ADC, but it is also possible to use it as another analog input or a digital IO pin. SCL and SDA provide access to the primary I2C bus (DTWI0), but again can also be used as digital IO if I2C is not being used. The secondary I2C bus (DTWI1) is presented on the A4/A5 pins as per the Arduino Uno.

Pins 2 through 6 have hardware interrupt capabilities, and pins 3, 5, 6, 9 and 10 can be hardware PWM outputs.

All the digital and analog IO pins and their functions are detailed in [Appendix A](#) on page 7.

## 8: RESET Button

Pressing the RESET button resets the board. Your program is restarted from the beginning and all run-time settings are reset to default.

## 9: MicroUSB Socket

For communication with a PC and uploading programs a Micro USB cable is required. Simply connect the cable to the Micro USB socket. Power is also provided through this socket if the DC power input is not used.

## 10: LEDs

The Lenny has four LEDs on-board. Three of them are under control of the PIC32 and one is a static power LED.

- **ON** – Static green Power LED
- **L** – User-controlled yellow LED accessible as PIN\_LED1 or IO number 22

- **TX** – This red LED is controlled by the USB Serial software to indicate data transmission. If USB Serial is not being used the LED can be manually controlled as PIN\_LED2 or IO number 23.
- **RX** – This red LED is controlled by the USB Serial software to indicate data reception. If USB Serial is not being used the LED can be manually controlled as PIN\_LED3 or IO number 24.

## 11: ICSP Header

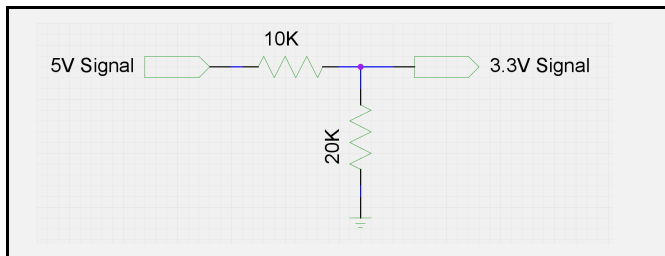
The ICSP header can be used to interface the PIC32 to a hardware PIC programmer, such as a PICKIT3 or RealICE. This can be used for such things as upgrading the bootloader, or direct programming of the PIC32 from MPLAB-X.

## 3 5V Operation

The chipKIT™ Lenny is a 3.3V device. That means that all IO pins operate at 3.3V. Input voltages to the IO pins must not exceed 3.3V or damage to the microcontroller may occur. However, some pins are able to withstand up to 5.5V, and if you need to interface with a 5V device these pins should be used to prevent damage and alleviate the need for a logic level converter.

The pins that are 5V tolerant are: 0-6, 8, SDA and SCL.

Most 5V devices will accept a 3.3V signal without requiring any translation. To translate a 5V signal into a 3.3V one which the Lenny can receive you can, for low speed signals, use a simple voltage divider consisting of a 10K resistor and a 20K resistor:



## 4 Programming

### 4.1 Entering the bootloader

The chipKIT™ Lenny includes the simple FastProg circuit for entering the bootloader at a single press of a button. Simply press the PROG button to reset the board and enter into bootloader mode.

The FastProg circuit can be manually disabled, if required by simply cutting one link on the board (see [Appendix C](#) on page 10). This releases the PROG button to be used for other purposes as well as entering the bootloader. If FastProg is disabled, entering the bootloader then entails holding the PROG button whilst pressing the RESET button.

### 4.2 Uploading Firmware

Using the bootloader it is possible to upload firmware directly to the board without the need of a hardware programmer. A standard protocol, STK500V2<sup>1</sup>, is used through the CDC/ACM port to transfer the firmware into the internal flash of the PIC32 chip.

It is recommended to use an IDE such as UECIDE or the Arduino IDE to upload firmware to the board. It is possible to perform a manual upload from the command line, or integrate the command into your own preferred third party IDE. Please refer to [AN1938: Manual Programming of chipKIT™ boards](#) for more detail on manual programming.

<sup>1</sup>STK500 is a proprietary protocol created by Atmel for their hardware programmers. It has since been extended to support bootloaders and has rapidly become the preferred bootloader protocol for many systems.

## 5 Electrical Characteristics

This section provides an overview of the chipKIT™ Lenny electrical characteristics. Additional information will be provided in future revisions of this document as it becomes available.

Absolute maximum ratings for the chipKIT™ Lenny are listed below. Exposure to these maximum rating conditions for extended periods may affect device reliability. Functional operation of the device at these or any other conditions, above the parameters indicated in the operation listings of this specification, is not implied.

### 5.1 Absolute Maximum Ratings

Stresses above those listed under “Absolute Maximum Ratings” may cause permanent damage to the device. This is a stress rating only and functional operation of the device at those or any other conditions, above those indicated in the operation listings of this specification, is not implied. Exposure to maximum rating conditions for extended periods may affect device reliability.

Ambient temperature under bias .....	-40°C to +105°C
Storage temperature .....	-65°C to +150°C
Voltage on Vin with respect to GND .....	-0.3V to +12.0V
Voltage on 5V with respect to GND .....	-0.3V to +5.5V
Voltage on 3.3V with respect to GND .....	-0.3V to +4.0V
Voltage on any pin that is not 5V tolerant, with respect to GND .....	-0.3V to +3.6V
Voltage on any 5V tolerant pin with respect to GND .....	-0.3V to +5.5V
Maximum output current sunk by any I/O pin .....	15 mA
Maximum output current sourced by any I/O pin .....	15 mA
Maximum current sunk by all ports .....	200 mA
Maximum current sourced by all ports .....	200 mA

### 5.2 DC Characteristics

Operating voltage (Vin) .....	+6.5V to +12V
Operating voltage (USB) .....	+4.5V to +5.5V
Idle <sup>1</sup> current consumption (Vin) .....	20mA
Idle consumption (USB) .....	25mA

### 5.3 AC Characteristics

Nominal core frequency .....	40MHz
External clock generator frequency .....	8MHz

<sup>1</sup>Clocking at 40MHz with no program loaded

## A Pin Mapping

### A.1 Board Pins

Board pin	Port	Static Functions	Assigned Functions
5V		5V Supply Voltage	
Vin		Input power (6.5V - 12V)	
3V3		3.3V Core Supply Voltage	
IOREF		3.3V Logic Voltage	
GND		Common Ground	
RESET		Master reset	
PROG	RB4	SOSCI/RPB4/RB4	
0	RC8	RPC8/PMA5/RC8	U1RX
1	RC9	RPC9/CTED7/PMA6/RC9	U1TX
2	RB7	RPB7/CTED3/PMD5/RB7	INT0/U2TX
3	RC4	RPC4/PMA4/RC4	INT1/PWM
4	RC6	RPC6/PMA1/RC6	INT2/U2RX
5	RB5	RPB5/USBID/RB5	INT3/PWM
6	RC7	RPC7/PMA0/RC7	INT4/PWM
7	RA3	OSC2/CLKO/RPA3/RA3	
8	RC5	RPC5/PMA3/RC5	PWM
9	RC3	AN12/RPC3/RC3	SS1/PWM
10	RC1	AN7/RPC1/RC1	
11	RB13	AN11/RPB13/CTPLS/PMRD/RB13	MOSI1
12	RB1	PGEC1/AN3/C1INC/C2INA/RPB1/CTED12/PMD1/RB1	MISO1
13	RB14	CVREFOUT/AN10/C3INB/RPB14/VBUSON/SCK1/CTED5/RB14	SCK1
14/A0	RA1	PGEC3/VREF-/CVREF-/AN1/RPA1/CTED2/PMD6/RA1	A0
15/A1	RB0	PGED1/AN2/C1IND/C2INB/C3IND/RPB0/PMD0/RB0	A1
16/A2	RC0	AN6/RPC0/RC0	A2
17/A3	RC2	AN8/RPC2/PMA2/RC2	A3
18/A4	RB2	AN4/C1INB/C2IND/RPB2/SDA2/CTED13/PMD2/RB2	A4/SDA2
19/A5	RB3	AN5/C1INA/C2INC/RTCC/RPB3/SCL2/PMWR/RB3	A5/SCL2
20/AREF	RA0	PGED3/VREF+/CVREF+/AN0/C3INC/RPA0/CTED1/PMD7/RA0	AREF
21/PROG	RB4	SOSCI/RPB4/RB4	PROG
22/L	RA10	PGED4/TMS/PMA10/RA10	L LED
23/TX	RA7	PGEC4/TCK/CTED8/PMA7/RA7	TX LED
24/RX	RA8	TDO/RPA8/PMA8/RA8	RX LED
25/MISO	RA4	SOSCO/RPA4/TICK/CTED9/RA4	MISO2
26/SCK	RB15	AN9/C3INA/RPB15/SCK2/CTED6/PMCS1/RB15	SCK2
27/MOSI	RA9	TDI/RPA9/PMA9/RA9	MOSI2
28/SDA	RB9	RPB9/SDA1/CTED4/PMD3/RB9	SDA1
29/SCL	RB8	RPB8/SCL1/CTED10/PMD4/RB8	SCL1



## A.2 Chip Pins

Chip pin	Board Pin	Static Functions	Assigned Functions
1	28/SDA	RPB9/SDA1/CTED4/PMD3/RB9	SDA1
2	4	RPC6/PMA1/RC6	INT2/U2RX
3	6	RPC7/PMA0/RC7	INT4/PWM
4	0	RPC8/PMA5/RC8	U1RX
5	1	RPC9/CTED7/PMA6/RC9	U1TX
6		VSS	
7		VCAP	
8		PGED2/RPB10/D+/CTED11/RB10	USB
9		PGEC2/RPB11/D-/RB11	USB
10		VUSB3V3	
11	11	AN11/RPB13/CTPLS/PMRD/RB13	MOSI1
12	22/L	PGED4/TMS/PMA10/RA10	L LED
13	23/TX	PGEC4/TCK/CTED8/PMA7/RA7	TX LED
14	13	CVREFOUT/AN10/C3INB/RPB14/VBUSON/SCK1/CTED5/RB14	SCK1
15	26/SCK	AN9/C3INA/RPB15/SCK2/CTED6/PMCS1/RB15	SCK2
16		AVSS	
17		AVDD	
18		MCLR	
19	20/AREF	PGED3/VREF+/CVREF+/AN0/C3INC/RPA0/CTED1/PMD7/RA0	AREF
20	14/A0	PGEC3/VREF-/CVREF-/AN1/RPA1/CTED2/PMD6/RA1	A0
21	15/A1	PGED1/AN2/C1IND/C2INB/C3IND/RPB0/PMD0/RB0	A1
22	12	PGEC1/AN3/C1INC/C2INA/RPB1/CTED12/PMD1/RB1	MISO1
23	18/A4	AN4/C1INB/C2IND/RPB2/SDA2/CTED13/PMD2/RB2	A4/SDA2
24	19/A5	AN5/C1INA/C2INC/RTCC/RPB3/SCL2/PMWR/RB3	A5/SCL2
25	16/A2	AN6/RPC0/RC0	A2
26	10	AN7/RPC1/RC1	SS1/PWM
27	17/A3	AN8/RPC2/PMA2/RC2	A3
28		VDD	
29		VSS	
30		OSC1/CLKI/RPA2/RA2	CLK
31	7	OSC2/CLKO/RPA3/RA3	
32	24/RX	TDO/RPA8/PMA8/RA8	RX LED
33	21/PROG	SOSCI/RPB4/RB4	PROG
34	25/MISO	SOSCO/RPA4/T1CK/CTED9/RA4	MISO2
35	27/MOSI	TDI/RPA9/PMA9/RA9	MOSI2
36	9	AN12/RPC3/RC3	PWM
37	3	RPC4/PMA4/RC4	INT1/PWM
38	8	RPC5/PMA3/RC5	
39		VSS	
40		VDD	
41	5	RPB5/USBID/RB5	INT3/PWM
42		VBUS	
43	2	RPB7/CTED3/PMD5/RB7	INT0/U2TX
44	29/SCL	RPB8/SCL1/CTED10/PMD4/RB8	SCL1

## B Peripheral Mapping

### B.1 SPI

The Lenny board has 2 SPI ports each capable of up to 20Mbps operation. Both are abstracted by the standard chipKIT™ API's DSPI.h library.

Function	Pin
<b>DSPI0 / SPI1</b>	
MISO (SDI1)	12
MOSI (SDO1)	11
SCK1	13
SS1	10
<b>DSPI1 / SPI2</b>	
MISO (SDI2)	25
MOSI (SDO2)	27
SCK2	26
SS2	9

### B.2 I<sup>2</sup>C

The Lenny board has two I<sup>2</sup>C ports available. Only one is abstracted by the standard chipKIT™ API's Wire.h library but both are available to the DTWI.h library.

Function	Pin
<b>Wire / DTWI0 / I2C1</b>	
SDA1 (Data)	28/SDA
SCL1 (Clock)	29/SCL
<b>DTWI1 / I2C2</b>	
SDA2 (Data)	A4
SCL2 (Clock)	A5

### B.3 UART

The Lenny board has two UART peripherals in addition to the USB UART (CDC/ACM) connection. UART 2 is mapped to Serial0 and UART 1 is mapped to Serial1.

Function	Pin
<b>Serial0 / UART2</b>	
RX	0
TX	1
<b>Serial1 / UART1</b>	
RX	4
TX	2

### B.4 PWM

The Lenny board has five hardware PWM pins. They are mapped as follows:

Function	Pin
OC1	6
OC2	5
OC3	3
OC4	9
OC5	10

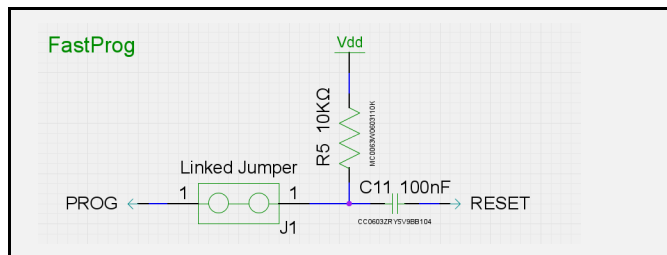
### B.5 Interrupts

The Lenny board has five hardware interrupt pins. They are mapped as follows:

Function	Pin
INT0	2
INT1	3
INT2	4
INT3	5
INT4	6

## C FastProg

The FastProg system allows rapid entry into a boot-loader, which is a task that would otherwise require a complex multi-button operation. When the PROG button is pressed (active LOW) a 100nF capacitor filters the LOW signal to create a brief LOW pulse. This pulse is then applied to the RESET pin to reset the microcontroller whilst the PROG button is still being pressed, allowing the boot-loader to instantly start operating. The circuit included in the Lenny is as follows:



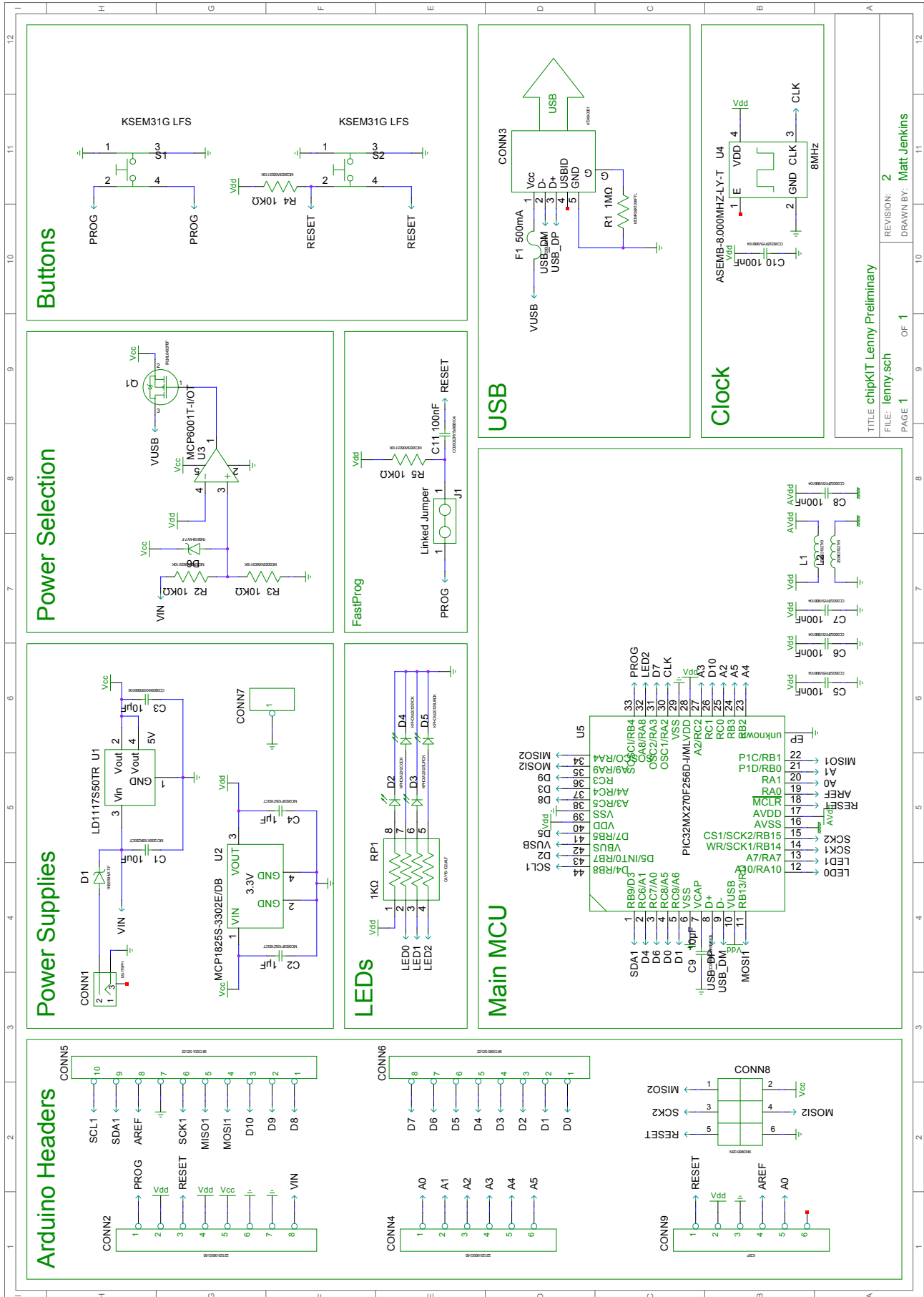
By cutting the link joining the two pins of J1 (Linked Jumper) it is possible to disable the FastProg functionality entirely. The PROG button then becomes available as IO pin 21 for use in your own programs. Normally resistor R5 provides pullup functionality for the PROG button, but with the linked jumper disconnected there is no pullup. As a result, to use PROG in your own program you should enable the internal pullup in the IO pin with:

```
pinMode(21, INPUT_PULLUP);
```

**Example 1:** Enabling internal pullup for PROG button

Should FastProg functionality be required again in the future, the linked jumper J1 can either be soldered back together, or a 0.1" jumper can be soldered in place to allow FastProg to be enabled and disabled at will.

# D Schematic



TITLE: chipKIT Lenny Preliminary  
 FILE: lenny.sch  
 PAGE 1 OF 1  
 REVISION: 2  
 DRAWN BY: Matt Jenkins

## E License

### E.1 License Brief

The Lenny board is an open-source project distributed under the Creative Commons “CC BY-NC 3.0” Attribution-NonCommercial license.

Under the terms of this license you are free to:

- **Share** – Copy and redistribute the material and designs in any medium or format
- **Adapt** – Remix, transform, and build upon the material and designs.

Under the following terms:

- **Attribution** – You must give appropriate credit, provide a link to the license, and indicate if changes were made. You may do so in any reasonable manner, but not in any way that suggests the licensor endorses you or your use.
- **NonCommercial** – You may not use the material or designs for commercial purposes.
- **No additional restrictions** – You may not apply legal terms or technological measures that legally restrict others from doing anything the license permits.

You do not have to comply with the license for elements of the material in the public domain or where your use is permitted by an applicable exception or limitation.

No warranties are given. The license may not give you all of the permissions necessary for your intended use. For example, other rights such as publicity, privacy, or moral rights may limit how you use the material.

## E.2 License Full Text

THE WORK (AS DEFINED BELOW) IS PROVIDED UNDER THE TERMS OF THIS CREATIVE COMMONS PUBLIC LICENSE ("CCPL" OR "LICENSE"). THE WORK IS PROTECTED BY COPYRIGHT AND/OR OTHER APPLICABLE LAW. ANY USE OF THE WORK OTHER THAN AS AUTHORIZED UNDER THIS LICENSE OR COPYRIGHT LAW IS PROHIBITED.

BY EXERCISING ANY RIGHTS TO THE WORK PROVIDED HERE, YOU ACCEPT AND AGREE TO BE BOUND BY THE TERMS OF THIS LICENSE. TO THE EXTENT THIS LICENSE MAY BE CONSIDERED TO BE A CONTRACT, THE LICENSOR GRANTS YOU THE RIGHTS CONTAINED HERE IN CONSIDERATION OF YOUR ACCEPTANCE OF SUCH TERMS AND CONDITIONS.

### E.2.1 Definitions

1. **“Adaptation”** means a work based upon the Work, or upon the Work and other pre-existing works, such as a translation, adaptation, derivative work, arrangement of music or other alterations of a literary or artistic work, or phonogram or performance and includes cinematographic adaptations or any other form in which the Work may be recast, transformed, or adapted including in any form recognizably derived from the original, except that a work that constitutes a Collection will not be considered an Adaptation for the purpose of this License. For the avoidance of doubt, where the Work is a musical work, performance or phonogram, the synchronization of the Work in timed-relation with a moving image ("synching") will be considered an Adaptation for the purpose of this License.
2. **“Collection”** means a collection of literary or artistic works, such as encyclopedias and anthologies, or performances, phonograms or broadcasts, or other works or subject matter other than works listed in Section 1(f) below, which, by reason of the selection and arrangement of their contents, constitute intellectual creations, in which the Work is included in its entirety in unmodified form along with one or more other contributions, each constituting separate and independent works in themselves, which together are assembled into a collective whole. A work that constitutes a Collection will not be considered an Adaptation (as defined above) for the purposes of this License.
3. **“Distribute”** means to make available to the public the original and copies of the Work or Adaptation, as appropriate, through sale or other transfer of ownership.
4. **“Licensor”** means the individual, individuals, entity or entities that offer(s) the Work under the terms of this License.
5. **“Original Author”** means, in the case of a literary or artistic work, the individual, individuals, entity or entities who created the Work or if no individual or entity can be identified, the publisher; and in addition (i) in the case of a performance the actors, singers, musicians, dancers, and other persons who act, sing, deliver, declaim, play in, interpret or otherwise perform literary or artistic works or expressions of folklore; (ii) in the case of a phonogram the producer being the person or legal entity who first fixes the sounds of a performance or other sounds; and, (iii) in the case of broadcasts, the organization that transmits the broadcast.
6. **“Work”** means the literary and/or artistic work offered under the terms of this License including without limitation any production in the literary, scientific and artistic domain, whatever may be the mode or form of its expression including digital form, such as a book, pamphlet and other writing; a lecture, address, sermon or other work of the same nature; a dramatic or dramatico-musical work; a choreographic work or entertainment in dumb show; a musical composition with or without words; a cinematographic work to which are assimilated works expressed by a process analogous to cinematography; a work of drawing, painting, architecture, sculpture, engraving or lithography; a photographic work to which are assimilated works expressed by a process analogous to photography; a work of applied art; an illustration, map, plan, sketch or three-dimensional work relative to geography, topography, architecture or science; a performance; a broadcast; a phonogram; a compilation of data to the extent it is protected as a copyrightable work; or a work performed by a variety or circus performer to the extent it is not otherwise considered a literary or artistic work.
7. **“You”** means an individual or entity exercising rights under this License who has not previously violated the terms of this License with respect to the Work, or who has received express permission from the Licensor to exercise rights under this License despite a previous violation.
8. **“Publicly Perform”** means to perform public recitations of the Work and to communicate to the public those public recitations, by any means or process, including by wire or wireless means or public digital performances; to make available to the public Works in such a way that members of the public may access these Works from a place and at a place individually chosen by them; to perform the Work to the public by any means or process and the communication to the public of the performances of the Work, including by public digital performance; to broadcast and rebroadcast the Work by any means including signs, sounds or images.
9. **“Reproduce”** means to make copies of the Work by any means including without limitation by sound or

visual recordings and the right of fixation and reproducing fixations of the Work, including storage of a protected performance or phonogram in digital form or other electronic medium.

### E.2.2 Fair Dealing Rights.

Nothing in this License is intended to reduce, limit, or restrict any uses free from copyright or rights arising from limitations or exceptions that are provided for in connection with the copyright protection under copyright law or other applicable laws.

### E.2.3 License Grant.

Subject to the terms and conditions of this License, Licensor hereby grants You a worldwide, royalty-free, non-exclusive, perpetual (for the duration of the applicable copyright) license to exercise the rights in the Work as stated below:

1. to Reproduce the Work, to incorporate the Work into one or more Collections, and to Reproduce the Work as incorporated in the Collections;
2. to create and Reproduce Adaptations provided that any such Adaptation, including any translation in any medium, takes reasonable steps to clearly label, demarcate or otherwise identify that changes were made to the original Work. For example, a translation could be marked "The original work was translated from English to Spanish," or a modification could indicate "The original work has been modified.";
3. to Distribute and Publicly Perform the Work including as incorporated in Collections; and,
4. to Distribute and Publicly Perform Adaptations.

The above rights may be exercised in all media and formats whether now known or hereafter devised. The above rights include the right to make such modifications as are technically necessary to exercise the rights in other media and formats. Subject to Section 8(f), all rights not expressly granted by Licensor are hereby reserved, including but not limited to the rights set forth in Section 4(d).

### E.2.4 Restrictions.

The license granted in Section 3 above is expressly made subject to and limited by the following restrictions:

1. You may Distribute or Publicly Perform the Work only under the terms of this License. You must include a copy of, or the Uniform Resource Identifier

(URI) for, this License with every copy of the Work You Distribute or Publicly Perform. You may not offer or impose any terms on the Work that restrict the terms of this License or the ability of the recipient of the Work to exercise the rights granted to that recipient under the terms of the License. You may not sublicense the Work. You must keep intact all notices that refer to this License and to the disclaimer of warranties with every copy of the Work You Distribute or Publicly Perform. When You Distribute or Publicly Perform the Work, You may not impose any effective technological measures on the Work that restrict the ability of a recipient of the Work from You to exercise the rights granted to that recipient under the terms of the License. This Section 4(a) applies to the Work as incorporated in a Collection, but this does not require the Collection apart from the Work itself to be made subject to the terms of this License. If You create a Collection, upon notice from any Licensor You must, to the extent practicable, remove from the Collection any credit as required by Section 4(c), as requested. If You create an Adaptation, upon notice from any Licensor You must, to the extent practicable, remove from the Adaptation any credit as required by Section 4(c), as requested.

2. You may not exercise any of the rights granted to You in Section 3 above in any manner that is primarily intended for or directed toward commercial advantage or private monetary compensation. The exchange of the Work for other copyrighted works by means of digital file-sharing or otherwise shall not be considered to be intended for or directed toward commercial advantage or private monetary compensation, provided there is no payment of any monetary compensation in connection with the exchange of copyrighted works.
3. If You Distribute, or Publicly Perform the Work or any Adaptations or Collections, You must, unless a request has been made pursuant to Section 4(a), keep intact all copyright notices for the Work and provide, reasonable to the medium or means You are utilizing: (i) the name of the Original Author (or pseudonym, if applicable) if supplied, and/or if the Original Author and/or Licensor designate another party or parties (e.g., a sponsor institute, publishing entity, journal) for attribution ("Attribution Parties") in Licensor's copyright notice, terms of service or by other reasonable means, the name of such party or parties; (ii) the title of the Work if supplied; (iii) to the extent reasonably practicable, the URI, if any, that Licensor specifies to be associated with the Work, unless such URI does not refer to the copyright notice or licensing information for the Work; and, (iv) consistent with Section 3(b), in the case of an Adaptation, a credit identifying the use of the Work in the Adaptation (e.g., "French translation of the Work by Original Author," or "Screenplay based on original Work by Original Author"). The credit required by this Section 4(c) may be implemented in any reasonable manner; provided, however, that in the case of a Adaptation or Collection, at a minimum such credit

will appear, if a credit for all contributing authors of the Adaptation or Collection appears, then as part of these credits and in a manner at least as prominent as the credits for the other contributing authors. For the avoidance of doubt, You may only use the credit required by this Section for the purpose of attribution in the manner set out above and, by exercising Your rights under this License, You may not implicitly or explicitly assert or imply any connection with, sponsorship or endorsement by the Original Author, Licensor and/or Attribution Parties, as appropriate, of You or Your use of the Work, without the separate, express prior written permission of the Original Author, Licensor and/or Attribution Parties.

4. For the avoidance of doubt:

(a) **Non-waivable Compulsory License Schemes.** In those jurisdictions in which the right to collect royalties through any statutory or compulsory licensing scheme cannot be waived, the Licensor reserves the exclusive right to collect such royalties for any exercise by You of the rights granted under this License;

(b) **Waivable Compulsory License Schemes.** In those jurisdictions in which the right to collect royalties through any statutory or compulsory licensing scheme can be waived, the Licensor reserves the exclusive right to collect such royalties for any exercise by You of the rights granted under this License if Your exercise of such rights is for a purpose or use which is otherwise than noncommercial as permitted under Section 4(b) and otherwise waives the right to collect royalties through any statutory or compulsory licensing scheme; and,

(c) **Voluntary License Schemes.** The Licensor reserves the right to collect royalties, whether individually or, in the event that the Licensor is a member of a collecting society that administers voluntary licensing schemes, via that society, from any exercise by You of the rights granted under this License that is for a purpose or use which is otherwise than noncommercial as permitted under Section 4(c).

5. Except as otherwise agreed in writing by the Licensor or as may be otherwise permitted by applicable law, if You Reproduce, Distribute or Publicly Perform the Work either by itself or as part of any Adaptations or Collections, You must not distort, mutilate, modify or take other derogatory action in relation to the Work which would be prejudicial to the Original Author's honor or reputation. Licensor agrees that in those jurisdictions (e.g. Japan), in which any exercise of the right granted in Section 3(b) of this License (the right to make Adaptations) would be deemed to be a distortion, mutilation, modification or other derogatory action prejudicial to the Original Author's honor and reputation, the Licensor will waive or not assert, as appropriate, this Section, to the fullest extent permitted by the applicable national law, to enable You

to reasonably exercise Your right under Section 3(b) of this License (right to make Adaptations) but not otherwise.

### **E.2.5 Representations, Warranties and Disclaimer**

UNLESS OTHERWISE MUTUALLY AGREED TO BY THE PARTIES IN WRITING, LICENSOR OFFERS THE WORK AS-IS AND MAKES NO REPRESENTATIONS OR WARRANTIES OF ANY KIND CONCERNING THE WORK, EXPRESS, IMPLIED, STATUTORY OR OTHERWISE, INCLUDING, WITHOUT LIMITATION, WARRANTIES OF TITLE, MERCHANTABILITY, FITNESS FOR A PARTICULAR PURPOSE, NONINFRINGEMENT, OR THE ABSENCE OF LATENT OR OTHER DEFECTS, ACCURACY, OR THE PRESENCE OF ABSENCE OF ERRORS, WHETHER OR NOT DISCOVERABLE. SOME JURISDICTIONS DO NOT ALLOW THE EXCLUSION OF IMPLIED WARRANTIES, SO SUCH EXCLUSION MAY NOT APPLY TO YOU.

### **E.2.6 Limitation on Liability.**

EXCEPT TO THE EXTENT REQUIRED BY APPLICABLE LAW, IN NO EVENT WILL LICENSOR BE LIABLE TO YOU ON ANY LEGAL THEORY FOR ANY SPECIAL, INCIDENTAL, CONSEQUENTIAL, PUNITIVE OR EXEMPLARY DAMAGES ARISING OUT OF THIS LICENSE OR THE USE OF THE WORK, EVEN IF LICENSOR HAS BEEN ADVISED OF THE POSSIBILITY OF SUCH DAMAGES.

### **E.2.7 Termination**

1. This License and the rights granted hereunder will terminate automatically upon any breach by You of the terms of this License. Individuals or entities who have received Adaptations or Collections from You under this License, however, will not have their licenses terminated provided such individuals or entities remain in full compliance with those licenses. Sections 1, 2, 5, 6, 7, and 8 will survive any termination of this License.
2. Subject to the above terms and conditions, the license granted here is perpetual (for the duration of the applicable copyright in the Work). Notwithstanding the above, Licensor reserves the right to release the Work under different license terms or to stop distributing the Work at any time; provided, however that any such election will not serve to withdraw this License (or any other license that has been, or is required to be, granted under the terms of this License), and this License will continue in full force and effect unless terminated as stated above.



### E.2.8 Miscellaneous

1. Each time You Distribute or Publicly Perform the Work or a Collection, the Licensor offers to the recipient a license to the Work on the same terms and conditions as the license granted to You under this License.
2. Each time You Distribute or Publicly Perform an Adaptation, Licensor offers to the recipient a license to the original Work on the same terms and conditions as the license granted to You under this License.
3. If any provision of this License is invalid or unenforceable under applicable law, it shall not affect the validity or enforceability of the remainder of the terms of this License, and without further action by the parties to this agreement, such provision shall be reformed to the minimum extent necessary to make such provision valid and enforceable.
4. No term or provision of this License shall be deemed waived and no breach consented to unless such waiver or consent shall be in writing and signed by the party to be charged with such waiver or consent.
5. This License constitutes the entire agreement between the parties with respect to the Work licensed here. There are no understandings, agreements or representations with respect to the Work not specified here. Licensor shall not be bound by any additional provisions that may appear in any communication from You. This License may not be modified without the mutual written agreement of the Licensor and You.
6. The rights granted under, and the subject matter referenced, in this License were drafted utilizing the terminology of the Berne Convention for the Protection of Literary and Artistic Works (as amended on September 28, 1979), the Rome Convention of 1961, the WIPO Copyright Treaty of 1996, the WIPO Performances and Phonograms Treaty of 1996 and the Universal Copyright Convention (as revised on July 24, 1971). These rights and subject matter take effect in the relevant jurisdiction in which the License terms are sought to be enforced according to the corresponding provisions of the implementation of those treaty provisions in the applicable national law. If the standard suite of rights granted under applicable copyright law includes additional rights not granted under this License, such additional rights are deemed to be included in the License; this License is not intended to restrict the license of any rights under applicable law.

## F Document Revisions

1. MJ ... 14/07/2016 ..... Initial draft
2. SB ... 25/08/2016 ..... Grammatical cleanup
3. MJ ... 26/7/2017 ..... Removed from draft